



Legend

Subtransmission Line

Map Page Indicator

amec

1 in = 1 miles

0

0.25

0.5

1

Miles

Map Sources: Esri, DeLorme, TomTom, USGS

Appendix A1 - Biological Resources

MSHCP Biological Resources Technical Report

for the Valley-Ivyglen Subtransmission Line Project

Phase 1

Riverside County, California

Keymap





Path: Q:\NaturalResources\SCE\_Valley\lv\enl\mxd\2014\ReportsAndSubmissions\BTR\Phase1\BioResourceMaps\_Phase1.mxd, aaron.johnson, 10/8/2014

### Legend

**Project Features\***

**Pole Type**

- Guy
- LWSP
- Riser
- TSP
- Guard Structures
- Access Roads
- Material Yards
- Construction Avoidance Area (1 March - 31 August)
- Proposed Willow Planting Mitigation Area
- Conserved Lands (MSHCP)
- CPUC Buffer (May 2013)
- Riverside/Corona Resource Conservation District
- Map Page Indicator

**Subtransmission Route**

- Segment 1
- Segment 2
- Segment 3
- Underground Portion

**Fiber Optic Line**

- Overhead Fiber Optic Cable
- Underground Fiber Optic in Existing Conduit
- Underground Fiber Optic in New Conduit

**Drainage Control Features (90%)**

- Culvert
- Gabion
- Rip-Rap

**Impact Areas\***

- Permanent
- Temporary
- Tree Trimming Areas

**Sensitive Species Data**

- Sensitive Species (2013)
- Sensitive Species (2012)
- Sensitive Species (2011)
- Sensitive Species (2010)
- Sensitive Species (2009)
- Sensitive Species (2008)
- Sensitive Species (2007)
- Sensitive Species (2006)
- CNDDB (2013)

**Potential Burrowing Owl Burrows (w/signs)**

- AMEC (2011)
- AMEC (2013)

**Upland Vegetation Communities**

- AG - Agriculture
- AGFC - Agriculture Field Croplands
- RSS - Riversidean Sage Scrub
- DRSS - Disturbed Riversidean Sage Scrub
- DDL - Residential/Urban/Exotic
- NNG - Non-native Grassland
- DNNG - Disturbed Non-native Grassland

**MSHCP Riparian/Riverine Vegetation Communities**

- CAM - Cismontane Alkali Marsh
- SWS - Southern Willow Scrub
- SCWR - Southern Cottonwood/Willow Riparian Forest
- MFS - Mule Fat Scrub
- RS - Riparian Scrub
- Riverine
- Vernal Pool

**Potential Jurisdictional Waters (AMEC)**

- Waters of the U.S. and Waters of the State of California
- Wetland
- Existing Culvert
- Impacted Jurisdictional Features

**\* Map Notes:**

- Project Features subject to change based on geotechnical investigations, final engineering, ongoing coordination with the resource agencies, and field assessments conducted prior to construction
- Map Current as of 10/9/2014

**amec**

1 inch = 300 feet

0 150 300 Feet

N

**Appendix A1 - Biological Resources**

**MSHCP Biological Resources Technical Report**

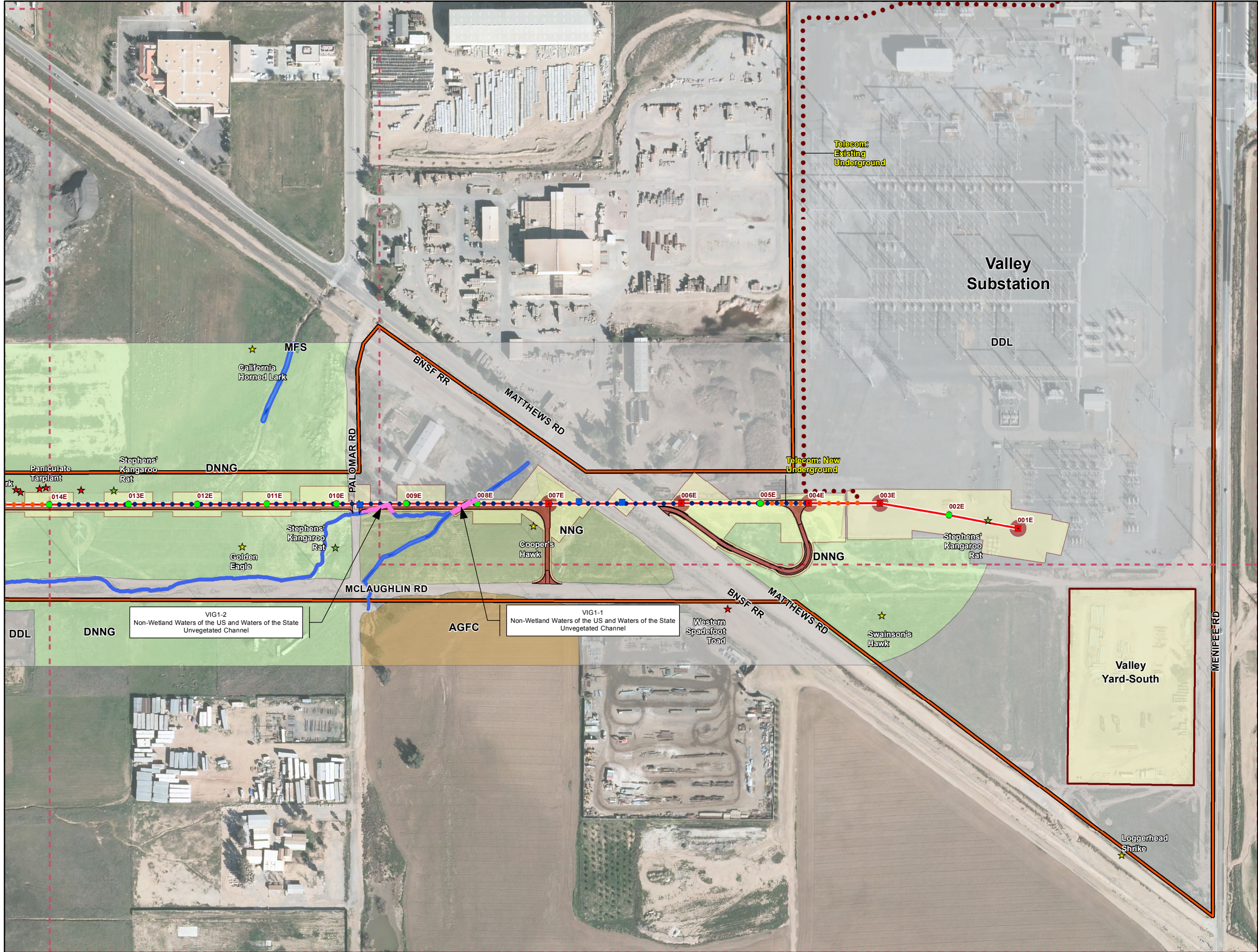
**for the Valley-Ivyglen Subtransmission Line Project**

**Phase 1**

**Riverside County, California**

**Map 1**





### Legend

**Project Features\***

**Pole Type**

- Guy
- LWSP
- Riser
- TSP
- Guard Structures
- Access Roads
- Material Yards
- Construction Avoidance Area (1 March - 31 August)
- Proposed Willow Planting Mitigation Area
- Conserved Lands (MSHCP)
- CPUC Buffer (May 2013)
- Riverside/Corona Resource Conservation District
- Map Page Indicator

**Subtransmission Route**

- Segment 1
- Segment 2
- Segment 3
- Underground Portion

**Fiber Optic Line**

- Overhead Fiber Optic Cable
- Underground Fiber Optic in Existing Conduit
- Underground Fiber Optic in New Conduit

**Drainage Control Features (90%)**

- Culvert
- Gabion
- Rip-Rap

**Impact Areas\***

- Permanent
- Temporary
- Tree Trimming Areas

**Sensitive Species Data**

- Sensitive Species (2013)
- Sensitive Species (2012)
- Sensitive Species (2011)
- Sensitive Species (2010)
- Sensitive Species (2009)
- Sensitive Species (2008)
- Sensitive Species (2007)
- Sensitive Species (2006)
- CNDD (2013)

**Potential Burrowing Owl Burrows (w/signs)**

- AMEC (2011)
- AMEC (2013)

**Upland Vegetation Communities**

- AG - Agriculture
- AGFC - Agriculture Field Croplands
- RSS - Riversidean Sage Scrub
- DRSS - Disturbed Riversidean Sage Scrub
- DDL - Residential/Urban/Exotic
- NNG - Non-native Grassland
- DNNG - Disturbed Non-native Grassland

**MSHCP Riparian/Riverine Vegetation Communities**

- CAM - Cismontane Alkali Marsh
- SWS - Southern Willow Scrub
- SCWR - Southern Cottonwood/Willow Riparian Forest
- MFS - Mule Fat Scrub
- RS - Riparian Scrub
- Riverine
- Vernal Pool

**Potential Jurisdictional Waters (AMEC)**

- Waters of the U.S. and Waters of the State of California
- Wetland
- Existing Culvert
- Impacted Jurisdictional Features

**\* Map Notes:**

- Project Features subject to change based on geotechnical investigations, final engineering, ongoing coordination with the resource agencies, and field assessments conducted prior to construction
- Map Current as of 10/9/2014

**Scale:** 1 inch = 300 feet

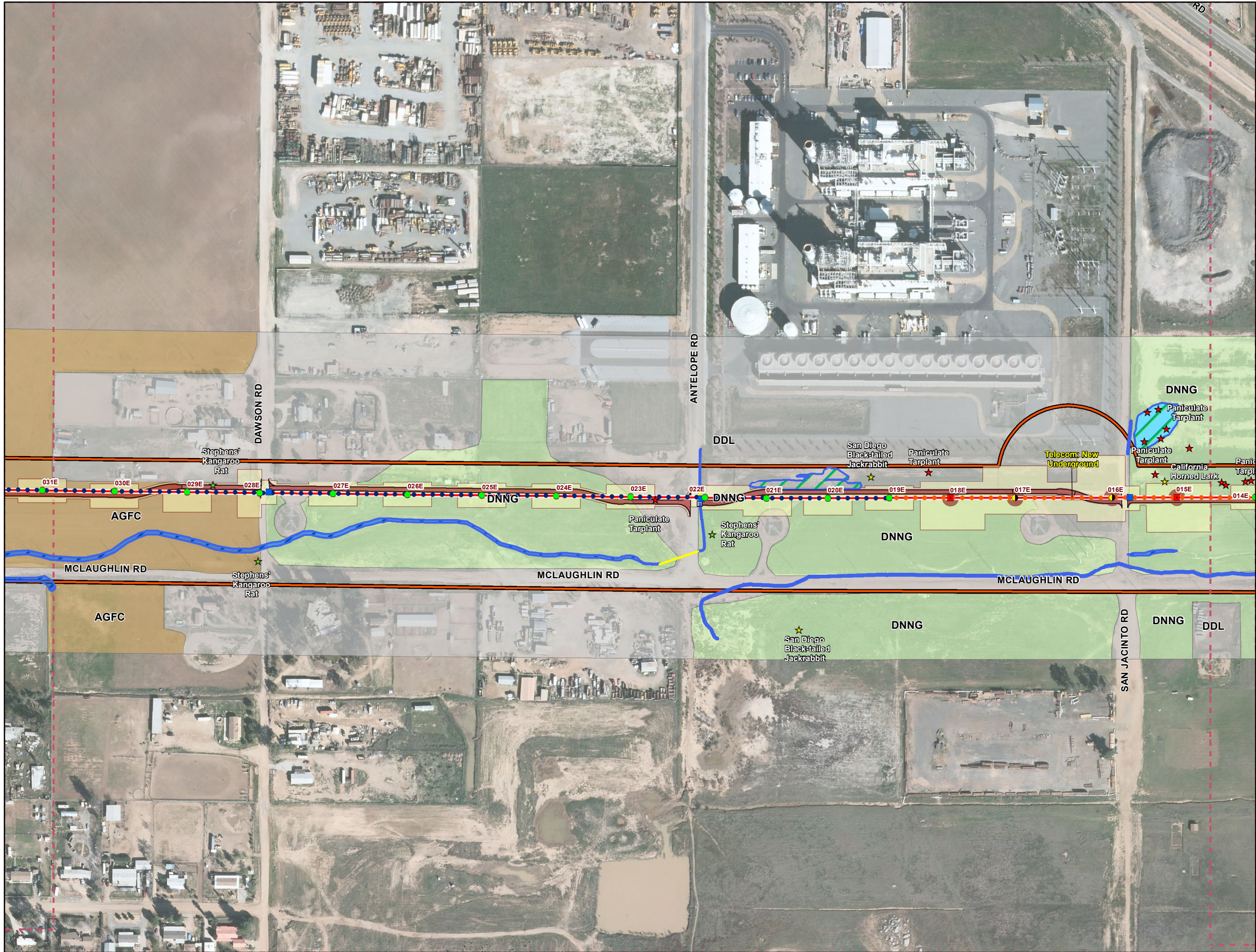
**North Arrow:** N

**amec**

**Appendix A1 - Biological Resources**  
**MSHCP Biological Resources Technical Report**  
**for the Valley-Ivyglen Subtransmission Line Project**  
**Phase 1**  
**Riverside County, California**

**Map 2**





### Legend

**Project Features\***

**Pole Type**

- Guy
- LWSP
- Riser
- TSP
- Guard Structures
- Access Roads
- Material Yards
- Construction Avoidance Area (1 March - 31 August)
- Proposed Willow Planting Mitigation Area
- Conserved Lands (MSHCP)
- CPUC Buffer (May 2013)
- Riverside/Corona Resource Conservation District
- Map Page Indicator

**Subtransmission Route**

- Segment 1
- Segment 2
- Segment 3
- Underground Portion

**Fiber Optic Line**

- Overhead Fiber Optic Cable
- Underground Fiber Optic in Existing Conduit
- Underground Fiber Optic in New Conduit

**Drainage Control Features (90%)**

- Culvert
- Gabion
- Rip-Rap

**Impact Areas\***

- Permanent
- Temporary
- Tree Trimming Areas

**Sensitive Species Data**

- Sensitive Species (2013)
- Sensitive Species (2012)
- Sensitive Species (2011)
- Sensitive Species (2010)
- Sensitive Species (2009)
- Sensitive Species (2008)
- Sensitive Species (2007)
- Sensitive Species (2006)
- CNDDB (2013)

**Potential Burrowing Owl Burrows (w/signs)**

- AMEC (2011)
- AMEC (2013)

**Upland Vegetation Communities**

- AG - Agriculture
- AGFC - Agriculture Field Croplands
- RSS - Riversidean Sage Scrub
- DRSS - Disturbed Riversidean Sage Scrub
- DDL - Residential/Urban/Exotic
- NNG - Non-native Grassland
- DNNG - Disturbed Non-native Grassland

**MSHCP Riparian/Riverine Vegetation Communities**

- CAM - Cismontane Alkali Marsh
- SWS - Southern Willow Scrub
- SCWR - Southern Cottonwood/Willow Riparian Forest
- MFS - Mule Fat Scrub
- RS - Riparian Scrub
- Riverine
- Vernal Pool

**Potential Jurisdictional Waters (AMEC)**

- Waters of the U.S. and Waters of the State of California
- Wetland
- Existing Culvert
- Impacted Jurisdictional Features

**\* Map Notes:**

- Project Features subject to change based on geotechnical investigations, final engineering, ongoing coordination with the resource agencies, and field assessments conducted prior to construction
- Map Current as of 10/9/2014

**amec**

1 inch = 300 feet

0 150 300 Feet

N

**Appendix A1 - Biological Resources**  
**MSHCP Biological Resources Technical Report**  
**for the Valley-Ivyglen Subtransmission Line Project**  
**Phase 1**  
**Riverside County, California**

**Map 3**





### Legend

**Project Features\***

**Pole Type**

- Guy
- LWSP
- Riser
- TSP
- Guard Structures
- Access Roads
- Material Yards
- Construction Avoidance Area (1 March - 31 August)
- Proposed Willow Planting Mitigation Area
- Conserved Lands (MSHCP)
- CPUC Buffer (May 2013)
- Riverside/Corona Resource Conservation District
- Map Page Indicator

**Subtransmission Route**

- Segment 1
- Segment 2
- Segment 3
- Underground Portion

**Fiber Optic Line**

- Overhead Fiber Optic Cable
- Underground Fiber Optic in Existing Conduit
- Underground Fiber Optic in New Conduit

**Drainage Control Features (90%)**

- Culvert
- Gabion
- Rip-Rap

**Impact Areas\***

- Permanent
- Temporary
- Tree Trimming Areas

**Sensitive Species Data**

- Sensitive Species (2013)
- Sensitive Species (2012)
- Sensitive Species (2011)
- Sensitive Species (2010)
- Sensitive Species (2009)
- Sensitive Species (2008)
- Sensitive Species (2007)
- Sensitive Species (2006)
- CNDDDB (2013)

**Potential Burrowing Owl Burrows (w/signs)**

- AMEC (2011)
- AMEC (2013)

**Upland Vegetation Communities**

- AG - Agriculture
- AGFC - Agriculture Field Croplands
- RSS - Riversidean Sage Scrub
- DRSS - Disturbed Riversidean Sage Scrub
- DDL - Residential/Urban/Exotic
- NNG - Non-native Grassland
- DNNG - Disturbed Non-native Grassland

**MSHCP Riparian/Riverine Vegetation Communities**

- CAM - Cismontane Alkali Marsh
- SWS - Southern Willow Scrub
- SCWR - Southern Cottonwood/Willow Riparian Forest
- MFS - Mule Fat Scrub
- RS - Riparian Scrub
- Riverine
- Vernal Pool

**Potential Jurisdictional Waters (AMEC)**

- Waters of the U.S. and Waters of the State of California
- Wetland
- Existing Culvert
- Impacted Jurisdictional Features

**\* Map Notes:**

- Project Features subject to change based on geotechnical investigations, final engineering, ongoing coordination with the resource agencies, and field assessments conducted prior to construction
- Map Current as of 10/9/2014

**amec**

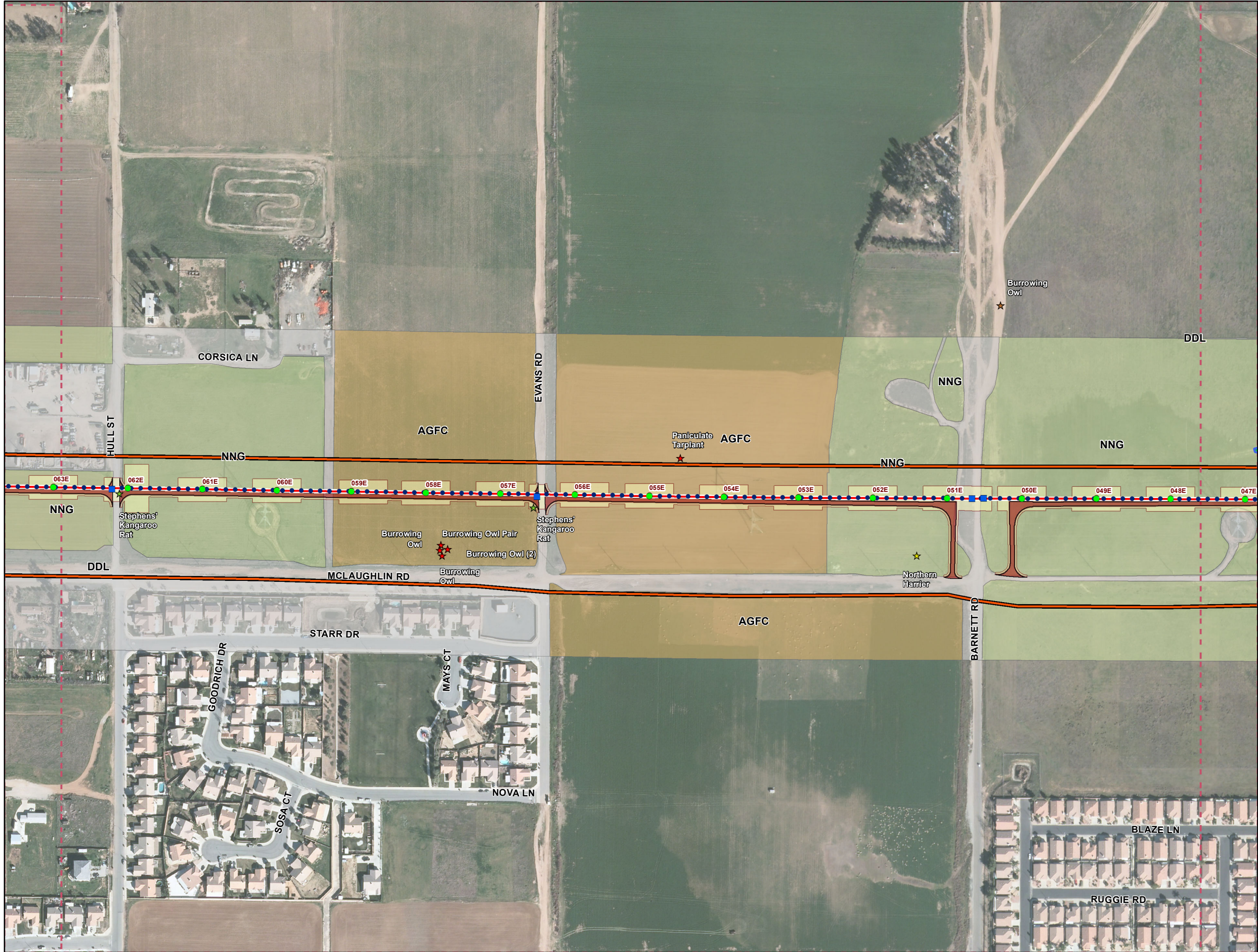
1 inch = 300 feet

0 150 300 Feet

**Appendix A1 - Biological Resources**  
**MSHCP Biological Resources Technical Report**  
**for the Valley-Ivyglen Subtransmission Line Project**  
**Phase 1**  
**Riverside County, California**

**Map 4**





Path: Q:\NaturalResources\SCE\_ValleyIvyglen\mxd\2014\ReportsAndSubmissions\BTR\Phase1\BioResourceMaps\_Phase1.mxd, aaron.johnson, 10/8/2014

### Legend

**Project Features\***

**Pole Type**

- Guy
- LWSP
- Riser
- TSP
- Guard Structures
- Access Roads
- Material Yards
- Construction Avoidance Area (1 March - 31 August)
- Proposed Willow Planting Mitigation Area
- Conserved Lands (MSHCP)
- CPUC Buffer (May 2013)
- Riverside/Corona Resource Conservation District
- Map Page Indicator

**Subtransmission Route**

- Segment 1
- Segment 2
- Segment 3
- Underground Portion

**Fiber Optic Line**

- Overhead Fiber Optic Cable
- Underground Fiber Optic in Existing Conduit
- Underground Fiber Optic in New Conduit

**Drainage Control Features (90%)**

- Culvert
- Gabion
- Rip-Rap

**Impact Areas\***

- Permanent
- Temporary
- Tree Trimming Areas

**Sensitive Species Data**

- Sensitive Species (2013)
- Sensitive Species (2012)
- Sensitive Species (2011)
- Sensitive Species (2010)
- Sensitive Species (2009)
- Sensitive Species (2008)
- Sensitive Species (2007)
- Sensitive Species (2006)
- CNDDB (2013)

**Potential Burrowing Owl Burrows (w/signs)**

- AMEC (2011)
- AMEC (2013)

**Upland Vegetation Communities**

- AG - Agriculture
- AGFC - Agriculture Field Croplands
- RSS - Riversidean Sage Scrub
- DRSS - Disturbed Riversidean Sage Scrub
- DDL - Residential/Urban/Exotic
- NNG - Non-native Grassland
- DNNG - Disturbed Non-native Grassland

**MSHCP Riparian/Riverine Vegetation Communities**

- CAM - Cismontane Alkali Marsh
- SWS - Southern Willow Scrub
- SCWR - Southern Cottonwood/Willow Riparian Forest
- MFS - Mule Fat Scrub
- RS - Riparian Scrub
- Riverine
- Vernal Pool

**Potential Jurisdictional Waters (AMEC)**

- Waters of the U.S. and Waters of the State of California
- Wetland
- Existing Culvert
- Impacted Jurisdictional Features

**\* Map Notes:**

- Project Features subject to change based on geotechnical investigations, final engineering, ongoing coordination with the resource agencies, and field assessments conducted prior to construction
- Map Current as of 10/9/2014

**amec**

1 inch = 300 feet

0 150 300 Feet

**Appendix A1 - Biological Resources**  
**MSHCP Biological Resources Technical Report**  
**for the Valley-Ivyglen Subtransmission Line Project**  
**Phase 1**  
**Riverside County, California**

**Map 5**





### Legend

**Project Features\***

**Pole Type**

- Guy
- LWSP
- Riser
- TSP
- Guard Structures
- Access Roads
- Material Yards
- Construction Avoidance Area (1 March - 31 August)
- Proposed Willow Planting Mitigation Area
- Conserved Lands (MSHCP)
- CPUC Buffer (May 2013)
- Riverside/Corona Resource Conservation District
- Map Page Indicator

**Subtransmission Route**

- Segment 1
- Segment 2
- Segment 3
- Underground Portion

**Fiber Optic Line**

- Overhead Fiber Optic Cable
- Underground Fiber Optic in Existing Conduit
- Underground Fiber Optic in New Conduit

**Drainage Control Features (90%)**

- Culvert
- Gabion
- Rip-Rap

**Impact Areas\***

- Permanent
- Temporary
- Tree Trimming Areas

**Sensitive Species Data**

- Sensitive Species (2013)
- Sensitive Species (2012)
- Sensitive Species (2011)
- Sensitive Species (2010)
- Sensitive Species (2009)
- Sensitive Species (2008)
- Sensitive Species (2007)
- Sensitive Species (2006)
- CNDDDB (2013)

**Potential Burrowing Owl Burrows (w/signs)**

- AMEC (2011)
- AMEC (2013)

**Upland Vegetation Communities**

- AG - Agriculture
- AGFC - Agriculture Field Croplands
- RSS - Riversidean Sage Scrub
- DRSS - Disturbed Riversidean Sage Scrub
- DDL - Residential/Urban/Exotic
- NNG - Non-native Grassland
- DNNG - Disturbed Non-native Grassland

**MSHCP Riparian/Riverine Vegetation Communities**

- CAM - Cismontane Alkali Marsh
- SWS - Southern Willow Scrub
- SCWR - Southern Cottonwood/Willow Riparian Forest
- MFS - Mule Fat Scrub
- RS - Riparian Scrub
- Riverine
- Vernal Pool

**Potential Jurisdictional Waters (AMEC)**

- Waters of the U.S. and Waters of the State of California
- Wetland
- Existing Culvert
- Impacted Jurisdictional Features

**\* Map Notes:**

- Project Features subject to change based on geotechnical investigations, final engineering, ongoing coordination with the resource agencies, and field assessments conducted prior to construction
- Map Current as of 10/9/2014

**amec**

1 inch = 300 feet

0 150 300 Feet

**Appendix A1 - Biological Resources**  
**MSHCP Biological Resources Technical Report**  
**for the Valley-Ivyglen Subtransmission Line Project**  
**Phase 1**  
**Riverside County, California**

**Map 6**





### Legend

**Project Features\***

**Pole Type**

- Guy
- LWSP
- Riser
- TSP
- Guard Structures
- Access Roads
- Material Yards
- Construction Avoidance Area (1 March - 31 August)
- Proposed Willow Planting Mitigation Area
- Conserved Lands (MSHCP)
- CPUC Buffer (May 2013)
- Riverside/Corona Resource Conservation District
- Map Page Indicator

**Subtransmission Route**

- Segment 1
- Segment 2
- Segment 3
- Underground Portion

**Fiber Optic Line**

- Overhead Fiber Optic Cable
- Underground Fiber Optic in Existing Conduit
- Underground Fiber Optic in New Conduit

**Drainage Control Features (90%)**

- Culvert
- Gabion
- Rip-Rap

**Impact Areas\***

- Permanent
- Temporary
- Tree Trimming Areas

**Sensitive Species Data**

- Sensitive Species (2013)
- Sensitive Species (2012)
- Sensitive Species (2011)
- Sensitive Species (2010)
- Sensitive Species (2009)
- Sensitive Species (2008)
- Sensitive Species (2007)
- Sensitive Species (2006)
- CNDDB (2013)

**Potential Burrowing Owl Burrows (w/signs)**

- AMEC (2011)
- AMEC (2013)

**Upland Vegetation Communities**

- AG - Agriculture
- AGFC - Agriculture Field Croplands
- RSS - Riversidean Sage Scrub
- DRSS - Disturbed Riversidean Sage Scrub
- DDL - Residential/Urban/Exotic
- NNG - Non-native Grassland
- DNNG - Disturbed Non-native Grassland

**MSHCP Riparian/Riverine Vegetation Communities**

- CAM - Cismontane Alkali Marsh
- SWS - Southern Willow Scrub
- SCWR - Southern Cottonwood/Willow Riparian Forest
- MFS - Mule Fat Scrub
- RS - Riparian Scrub
- Riverine
- Vernal Pool

**Potential Jurisdictional Waters (AMEC)**

- Waters of the U.S. and Waters of the State of California
- Wetland
- Existing Culvert
- Impacted Jurisdictional Features

**\* Map Notes:**

- Project Features subject to change based on geotechnical investigations, final engineering, ongoing coordination with the resource agencies, and field assessments conducted prior to construction
- Map Current as of 10/9/2014

**amec**

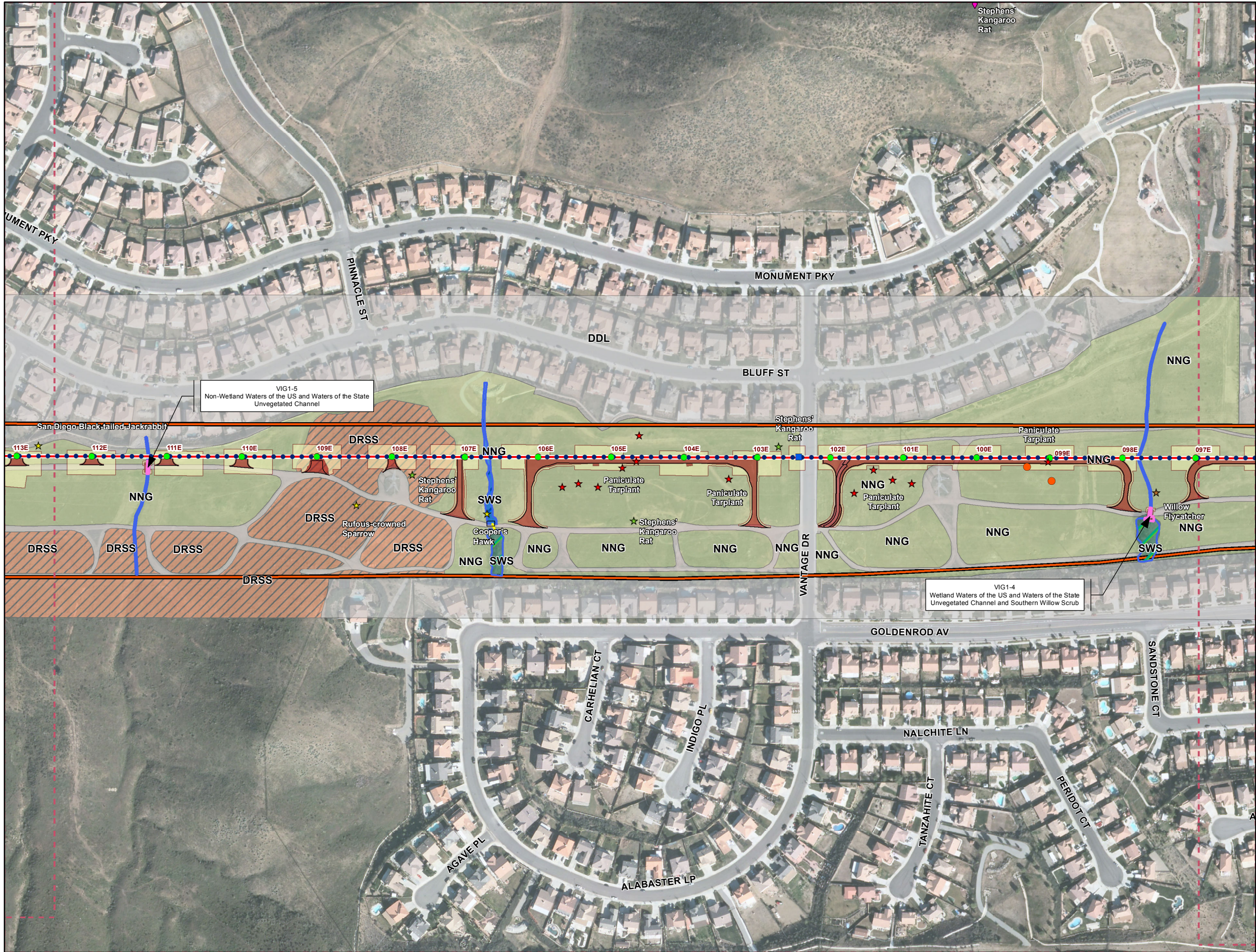
1 inch = 300 feet

0 150 300 Feet

**Appendix A1 - Biological Resources**  
**MSHCP Biological Resources Technical Report**  
**for the Valley-Ivyglen Subtransmission Line Project**  
**Phase 1**  
**Riverside County, California**

**Map 7**





### Legend

**Project Features\***

**Pole Type**

- Guy
- LWSP
- Riser
- TSP
- Guard Structures
- Access Roads
- Material Yards
- Construction Avoidance Area (1 March - 31 August)
- Proposed Willow Planting Mitigation Area
- Conserved Lands (MSHCP)
- CPUC Buffer (May 2013)
- Riverside/Corona Resource Conservation District
- Map Page Indicator

**Subtransmission Route**

- Segment 1
- Segment 2
- Segment 3
- Underground Portion

**Fiber Optic Line**

- Overhead Fiber Optic Cable
- Underground Fiber Optic in Existing Conduit
- Underground Fiber Optic in New Conduit

**Drainage Control Features (90%)**

- Culvert
- Gabion
- Rip-Rap

**Impact Areas\***

- Permanent
- Temporary
- Tree Trimming Areas

**Sensitive Species Data**

- Sensitive Species (2013)
- Sensitive Species (2012)
- Sensitive Species (2011)
- Sensitive Species (2010)
- Sensitive Species (2009)
- Sensitive Species (2008)
- Sensitive Species (2007)
- Sensitive Species (2006)
- CNDDB (2013)

**Potential Burrowing Owl Burrows (w/signs)**

- AMEC (2011)
- AMEC (2013)

**Upland Vegetation Communities**

- AG - Agriculture
- AGFC - Agriculture Field Croplands
- RSS - Riversidean Sage Scrub
- DRSS - Disturbed Riversidean Sage Scrub
- DDL - Residential/Urban/Exotic
- NNG - Non-native Grassland
- DNNG - Disturbed Non-native Grassland

**MSHCP Riparian/Riverine Vegetation Communities**

- CAM - Cismontane Alkali Marsh
- SWS - Southern Willow Scrub
- SCWR - Southern Cottonwood/Willow Riparian Forest
- MFS - Mule Fat Scrub
- RS - Riparian Scrub
- Riverine
- Vernal Pool

**Potential Jurisdictional Waters (AMEC)**

- Waters of the U.S. and Waters of the State of California
- Wetland
- Existing Culvert
- Impacted Jurisdictional Features

**\* Map Notes:**

- Project Features subject to change based on geotechnical investigations, final engineering, ongoing coordination with the resource agencies, and field assessments conducted prior to construction
- Map Current as of 10/9/2014

**amec**

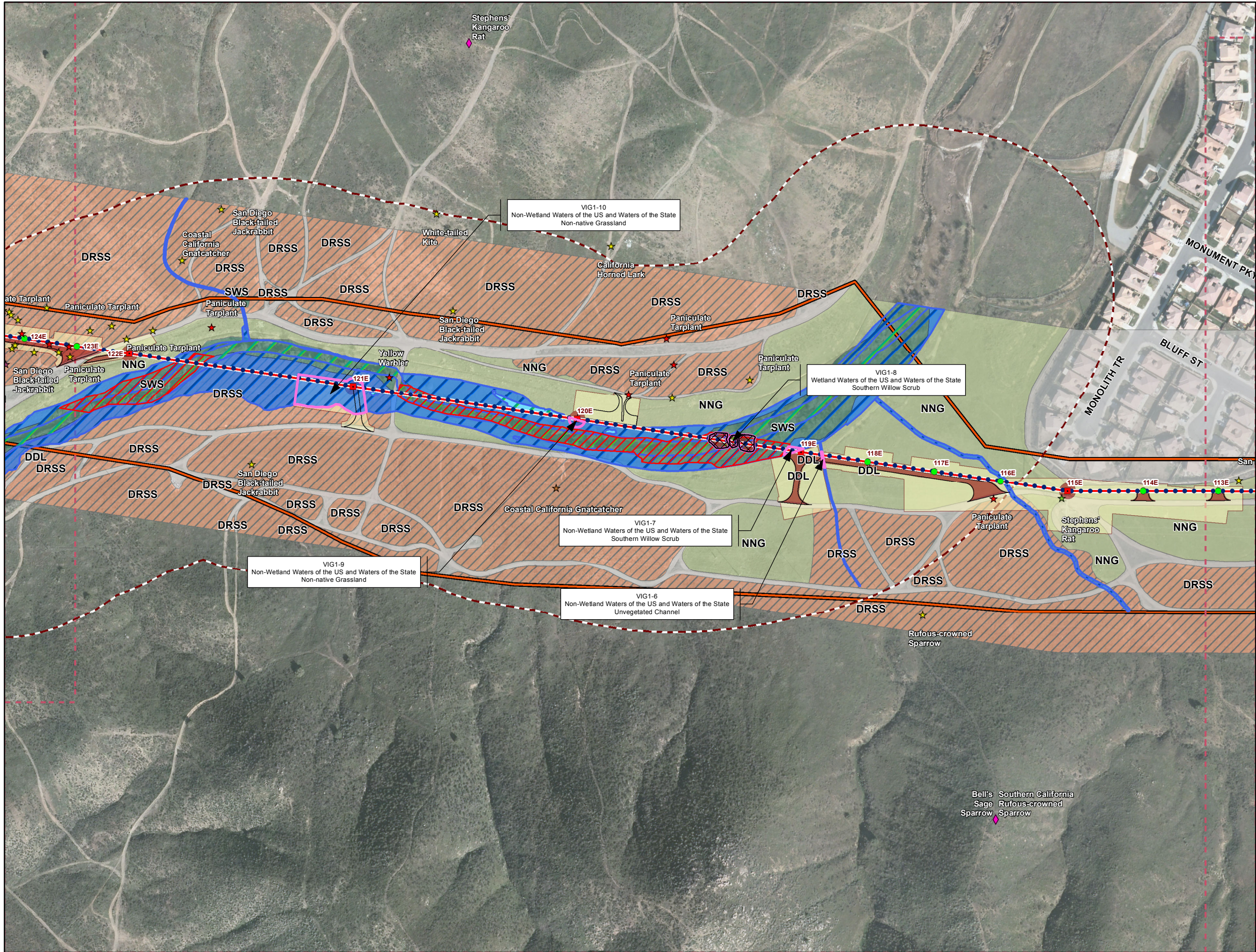
1 inch = 300 feet

0 150 300 Feet

**Appendix A1 - Biological Resources**  
**MSHCP Biological Resources Technical Report**  
**for the Valley-Ivyglen Subtransmission Line Project**  
**Phase 1**  
**Riverside County, California**

**Map 8**





Path: Q:\NaturalResources\SCE\_ValleyIvyglen\mxd\2014\ReportsAndSubmissions\BTR\Phase1\BioResourceMaps\_Phase1.mxd, aaron.johnson, 10/8/2014

### Legend

**Project Features\***

**Pole Type**

- Guy
- LWSP
- Riser
- TSP
- Guard Structures
- Access Roads
- Material Yards
- Construction Avoidance Area (1 March - 31 August)
- Proposed Willow Planting Mitigation Area
- Conserved Lands (MSHCP)
- CPUC Buffer (May 2013)
- Riverside/Corona Resource Conservation District
- Map Page Indicator

**Subtransmission Route**

- Segment 1
- Segment 2
- Segment 3
- Underground Portion

**Fiber Optic Line**

- Overhead Fiber Optic Cable
- Underground Fiber Optic in Existing Conduit
- Underground Fiber Optic in New Conduit

**Drainage Control Features (90%)**

- Culvert
- Gabion
- Rip-Rap

**Impact Areas\***

- Permanent
- Temporary
- Tree Trimming Areas

**Sensitive Species Data**

- Sensitive Species (2013)
- Sensitive Species (2012)
- Sensitive Species (2011)
- Sensitive Species (2010)
- Sensitive Species (2009)
- Sensitive Species (2008)
- Sensitive Species (2007)
- Sensitive Species (2006)
- CNDDB (2013)

**Potential Burrowing Owl Burrows (w/signs)**

- AMEC (2011)
- AMEC (2013)

**Upland Vegetation Communities**

- AG - Agriculture
- AGFC - Agriculture Field Croplands
- RSS - Riversidean Sage Scrub
- DRSS - Disturbed Riversidean Sage Scrub
- DDL - Residential/Urban/Exotic
- NNG - Non-native Grassland
- DNNG - Disturbed Non-native Grassland

**MSHCP Riparian/Riverine Vegetation Communities**

- CAM - Cismontane Alkali Marsh
- SWS - Southern Willow Scrub
- SCWR - Southern Cottonwood/Willow Riparian Forest
- MFS - Mule Fat Scrub
- RS - Riparian Scrub
- Riverine
- Vernal Pool

**Potential Jurisdictional Waters (AMEC)**

- Waters of the U.S. and Waters of the State of California
- Wetland
- Existing Culvert
- Impacted Jurisdictional Features

**\* Map Notes:**

- Project Features subject to change based on geotechnical investigations, final engineering, ongoing coordination with the resource agencies, and field assessments conducted prior to construction
- Map Current as of 10/9/2014

**amec**

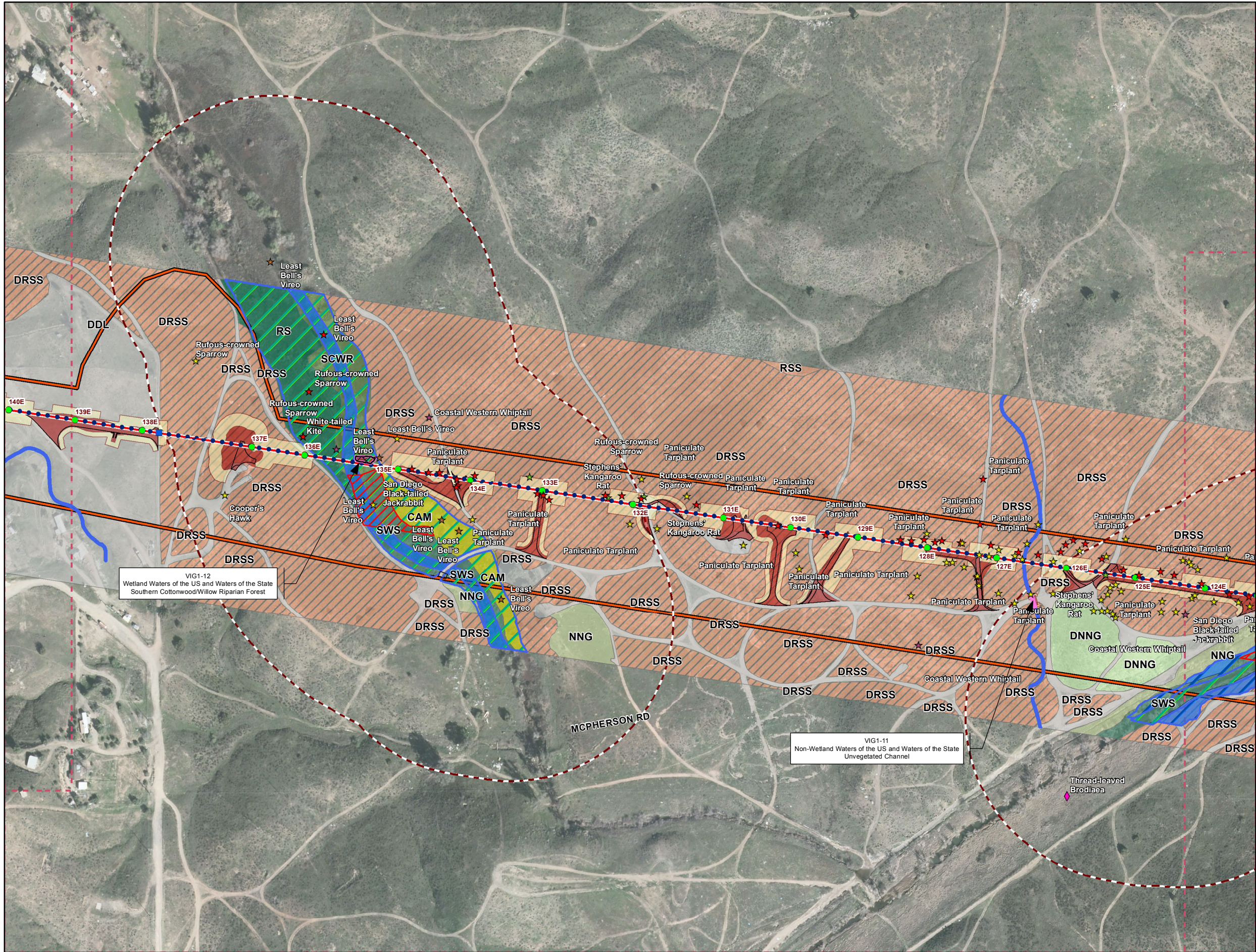
1 inch = 300 feet

0 150 300 Feet

**Appendix A1 - Biological Resources**  
**MSHCP Biological Resources Technical Report**  
**for the Valley-Ivyglen Subtransmission Line Project**  
**Phase 1**  
**Riverside County, California**

**Map 9**





### Legend

**Project Features\***

**Pole Type**

- Guy
- LWSP
- Riser
- TSP
- Guard Structures
- Access Roads
- Material Yards
- Construction Avoidance Area (1 March - 31 August)
- Proposed Willow Planting Mitigation Area
- Conserved Lands (MSHCP)
- CPUC Buffer (May 2013)
- Riverside/Corona Resource Conservation District
- Map Page Indicator

**Subtransmission Route**

- Segment 1
- Segment 2
- Segment 3
- Underground Portion

**Fiber Optic Line**

- Overhead Fiber Optic Cable
- Underground Fiber Optic in Existing Conduit
- Underground Fiber Optic in New Conduit

**Drainage Control Features (90%)**

- Culvert
- Gabion
- Rip-Rap

**Impact Areas\***

- Permanent
- Temporary
- Tree Trimming Areas

**Sensitive Species Data**

- Sensitive Species (2013)
- Sensitive Species (2012)
- Sensitive Species (2011)
- Sensitive Species (2010)
- Sensitive Species (2009)
- Sensitive Species (2008)
- Sensitive Species (2007)
- Sensitive Species (2006)
- CNDDB (2013)

**Potential Burrowing Owl Burrows (w/signs)**

- AMEC (2011)
- AMEC (2013)

**Upland Vegetation Communities**

- AG - Agriculture
- AGFC - Agriculture Field Croplands
- RSS - Riversidean Sage Scrub
- DRSS - Disturbed Riversidean Sage Scrub
- DDL - Residential/Urban/Exotic
- NNG - Non-native Grassland
- DNNG - Disturbed Non-native Grassland

**MSHCP Riparian/Riverine Vegetation Communities**

- CAM - Cismontane Alkali Marsh
- SWS - Southern Willow Scrub
- SCWR - Southern Cottonwood/Willow Riparian Forest
- MFS - Mule Fat Scrub
- RS - Riparian Scrub
- Riverine
- Vernal Pool

**Potential Jurisdictional Waters (AMEC)**

- Waters of the U.S. and Waters of the State of California
- Wetland
- Existing Culvert
- Impacted Jurisdictional Features

**\* Map Notes:**

- Project Features subject to change based on geotechnical investigations, final engineering, ongoing coordination with the resource agencies, and field assessments conducted prior to construction
- Map Current as of 10/9/2014

**amec**

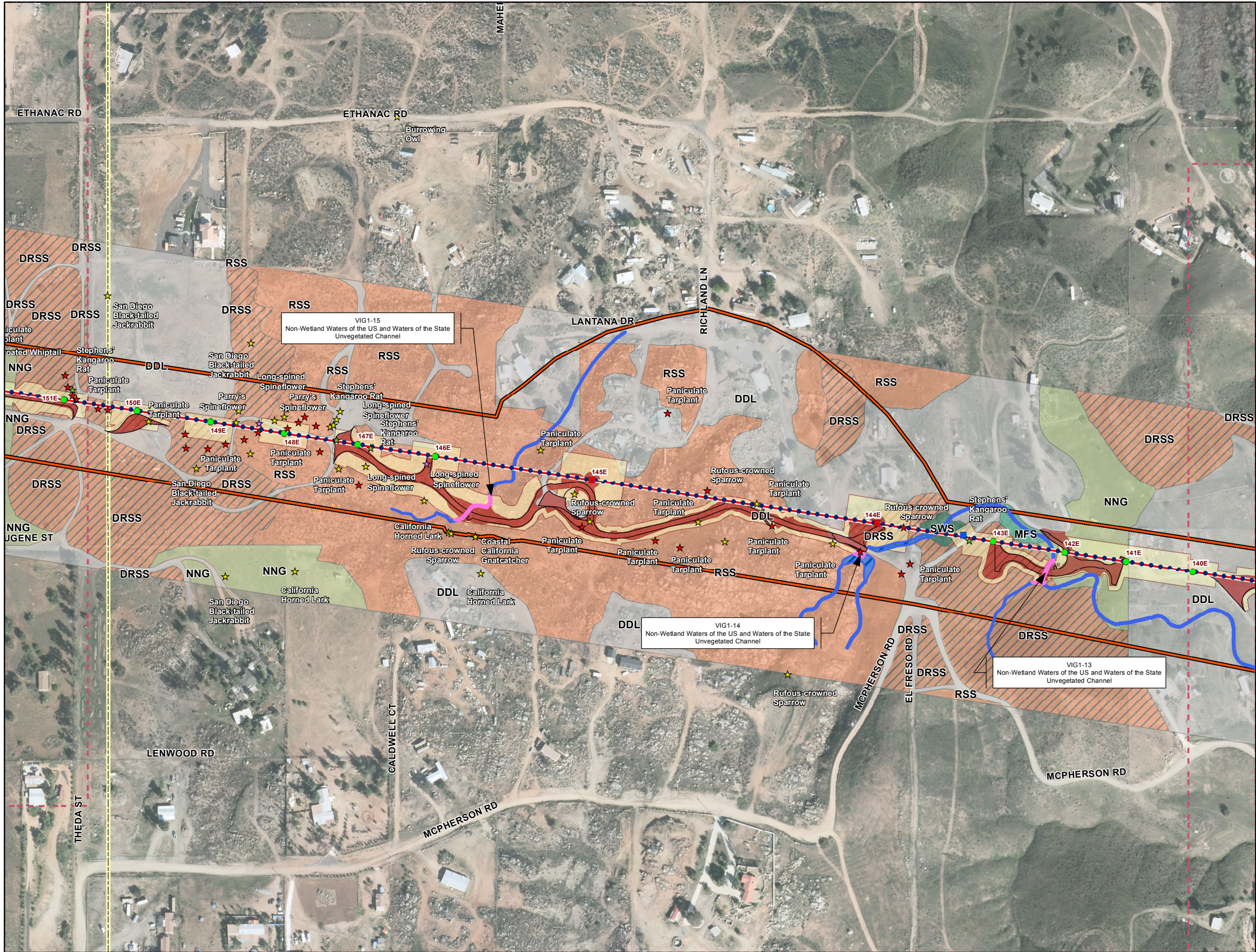
1 inch = 300 feet

0 150 300 Feet

**Appendix A1 - Biological Resources**  
**MSHCP Biological Resources Technical Report**  
**for the Valley-Ivyglen Subtransmission Line Project**  
**Phase 1**  
**Riverside County, California**

**Map 10**





### Legend

**Project Features\***

**Pole Type**

- Guy
- LWSP
- Riser
- TSP
- Guard Structures
- Access Roads
- Material Yards
- Construction Avoidance Area (1 March - 31 August)
- Proposed Willow Planting Mitigation Area
- Conserved Lands (MSHCP)
- CPUC Buffer (May 2013)
- Riverside/Corona Resource Conservation District
- Map Page Indicator

**Subtransmission Route**

- Segment 1
- Segment 2
- Segment 3
- Underground Portion

**Fiber Optic Line**

- Overhead Fiber Optic Cable
- Underground Fiber Optic in Existing Conduit
- Underground Fiber Optic in New Conduit

**Drainage Control Features (90%)**

- Culvert
- Gabion
- Rip-Rap

**Impact Areas\***

- Permanent
- Temporary
- Tree Trimming Areas

**Sensitive Species Data**

- Sensitive Species (2013)
- Sensitive Species (2012)
- Sensitive Species (2011)
- Sensitive Species (2010)
- Sensitive Species (2009)
- Sensitive Species (2008)
- Sensitive Species (2007)
- Sensitive Species (2006)
- CNDDB (2013)

**Potential Burrowing Owl Burrows (w/signs)**

- AMEC (2011)
- AMEC (2013)

**Upland Vegetation Communities**

- AG - Agriculture
- AGFC - Agriculture Field Croplands
- RSS - Riversidean Sage Scrub
- DRSS - Disturbed Riversidean Sage Scrub
- DDL - Residential/Urban/Exotic
- NNG - Non-native Grassland
- DNNG - Disturbed Non-native Grassland

**MSHCP Riparian/Riverine Vegetation Communities**

- CAM - Cismontane Alkali Marsh
- SWS - Southern Willow Scrub
- SCWR - Southern Cottonwood/Willow Riparian Forest
- MFS - Mule Fat Scrub
- RS - Riparian Scrub
- Riverine
- Vernal Pool

**Potential Jurisdictional Waters (AMEC)**

- Waters of the U.S. and Waters of the State of California
- Wetland
- Existing Culvert
- Impacted Jurisdictional Features

**\* Map Notes:**

- Project Features subject to change based on geotechnical investigations, final engineering, ongoing coordination with the resource agencies, and field assessments conducted prior to construction
- Map Current as of 10/9/2014

**amec**

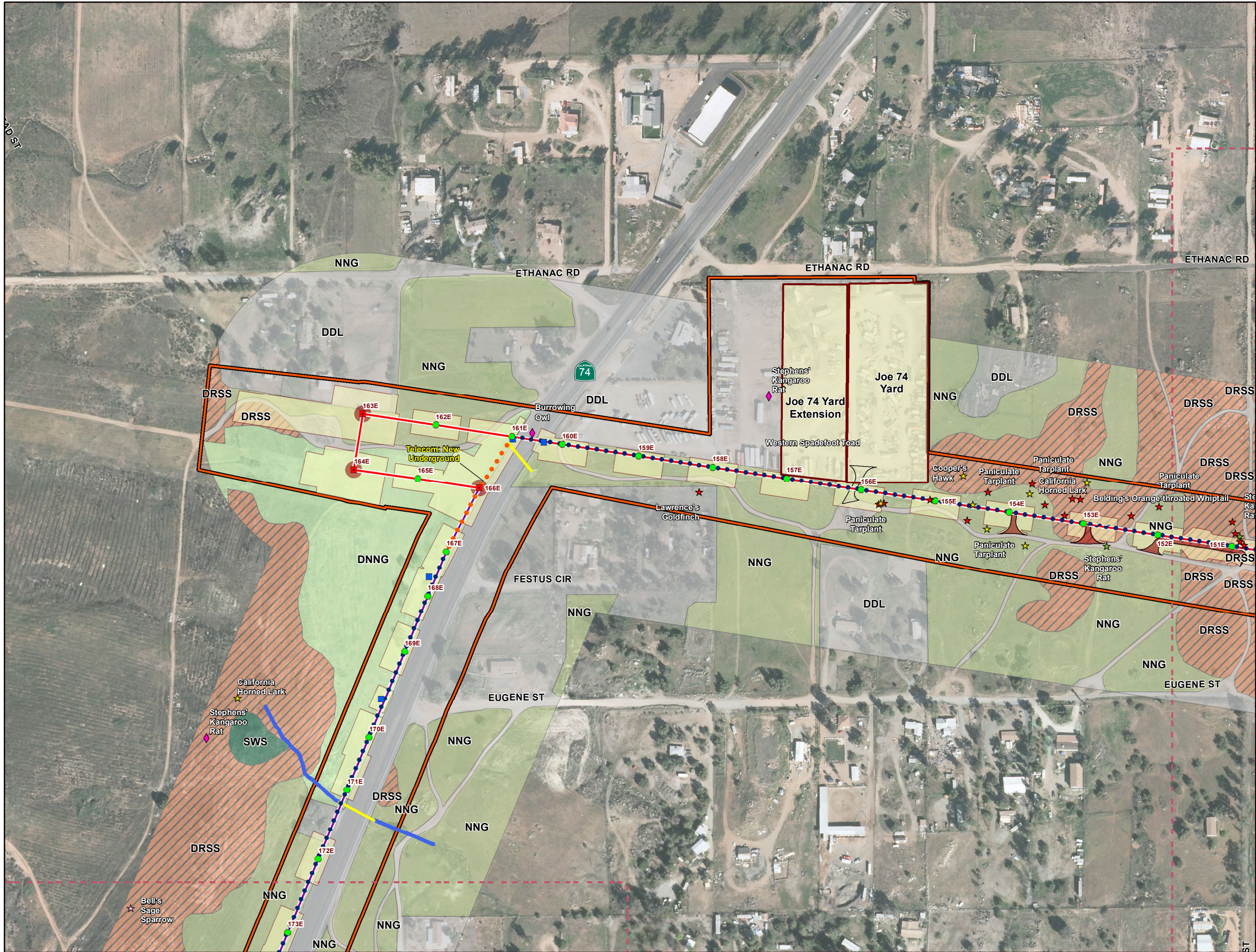
1 inch = 300 feet

0 150 300 Feet

**Appendix A1 - Biological Resources**  
**MSHCP Biological Resources Technical Report**  
**for the Valley-Ivyglen Subtransmission Line Project**  
**Phase 1**  
**Riverside County, California**

**Map 11**





### Legend

**Project Features\***

**Pole Type**

- Guy
- LWSP
- Riser
- TSP
- Guard Structures
- Access Roads
- Material Yards
- Construction Avoidance Area (1 March - 31 August)
- Proposed Willow Planting Mitigation Area
- Conserved Lands (MSHCP)
- CPUC Buffer (May 2013)
- Riverside/Corona Resource Conservation District
- Map Page Indicator

**Subtransmission Route**

- Segment 1
- Segment 2
- Segment 3
- Underground Portion

**Fiber Optic Line**

- Overhead Fiber Optic Cable
- Underground Fiber Optic in Existing Conduit
- Underground Fiber Optic in New Conduit

**Drainage Control Features (90%)**

- Culvert
- Gabion
- Rip-Rap

**Impact Areas\***

- Permanent
- Temporary
- Tree Trimming Areas

**Sensitive Species Data**

- Sensitive Species (2013)
- Sensitive Species (2012)
- Sensitive Species (2011)
- Sensitive Species (2010)
- Sensitive Species (2009)
- Sensitive Species (2008)
- Sensitive Species (2007)
- Sensitive Species (2006)
- CNDDB (2013)

**Potential Burrowing Owl Burrows (w/signs)**

- AMEC (2011)
- AMEC (2013)

**Upland Vegetation Communities**

- AG - Agriculture
- AGFC - Agriculture Field Croplands
- RSS - Riversidean Sage Scrub
- DRSS - Disturbed Riversidean Sage Scrub
- DDL - Residential/Urban/Exotic
- NNG - Non-native Grassland
- DNNG - Disturbed Non-native Grassland

**MSHCP Riparian/Riverine Vegetation Communities**

- CAM - Cismontane Alkali Marsh
- SWS - Southern Willow Scrub
- SCWR - Southern Cottonwood/Willow Riparian Forest
- MFS - Mule Fat Scrub
- RS - Riparian Scrub
- Riverine
- Vernal Pool

**Potential Jurisdictional Waters (AMEC)**

- Waters of the U.S. and Waters of the State of California
- Wetland
- Existing Culvert
- Impacted Jurisdictional Features

**\* Map Notes:**

- Project Features subject to change based on geotechnical investigations, final engineering, ongoing coordination with the resource agencies, and field assessments conducted prior to construction
- Map Current as of 10/9/2014

**amec**

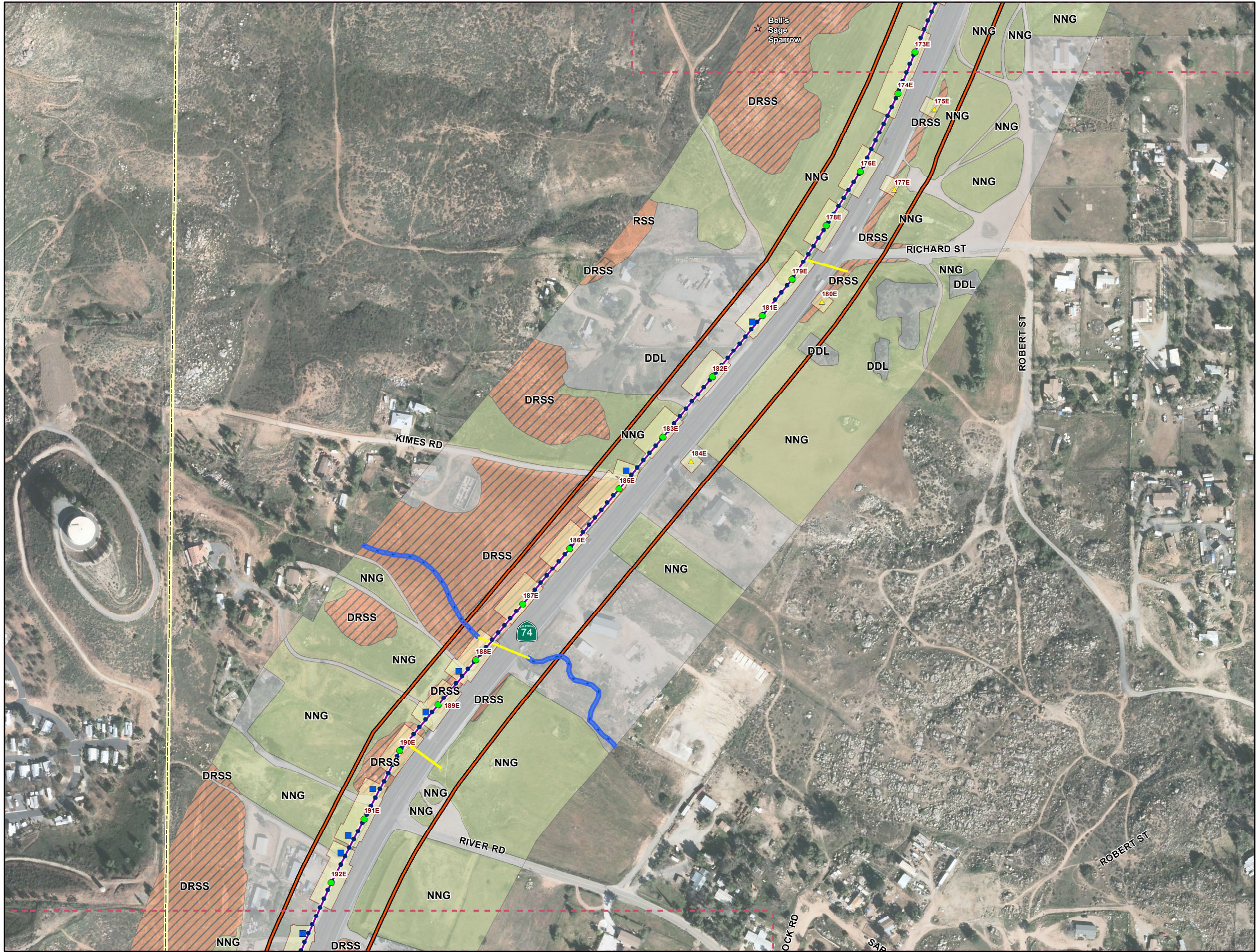
1 inch = 300 feet

0 150 300 Feet

**Appendix A1 - Biological Resources**  
**MSHCP Biological Resources Technical Report**  
**for the Valley-Ivyglen Subtransmission Line Project**  
**Phase 1**  
**Riverside County, California**

**Map 12**





Path: Q:\NaturalResources\SCE\_ValleyIvyglen\mxd\2014\ReportsAndSubmissions\BTR\Phase1\BioResourceMaps\_Phase1.mxd, aaron.johnson, 10/8/2014

### Legend

**Project Features\***

**Pole Type**

- Guy
- LWSP
- Riser
- TSP
- Guard Structures
- Access Roads
- Material Yards
- Construction Avoidance Area (1 March - 31 August)
- Proposed Willow Planting Mitigation Area
- Conserved Lands (MSHCP)
- CPUC Buffer (May 2013)
- Riverside/Corona Resource Conservation District
- Map Page Indicator

**Subtransmission Route**

- Segment 1
- Segment 2
- Segment 3
- Underground Portion

**Fiber Optic Line**

- Overhead Fiber Optic Cable
- Underground Fiber Optic in Existing Conduit
- Underground Fiber Optic in New Conduit

**Drainage Control Features (90%)**

- Culvert
- Gabion
- Rip-Rap

**Impact Areas\***

- Permanent
- Temporary
- Tree Trimming Areas

**Sensitive Species Data**

- Sensitive Species (2013)
- Sensitive Species (2012)
- Sensitive Species (2011)
- Sensitive Species (2010)
- Sensitive Species (2009)
- Sensitive Species (2008)
- Sensitive Species (2007)
- Sensitive Species (2006)
- CNDDDB (2013)

**Potential Burrowing Owl Burrows (w/signs)**

- AMEC (2011)
- AMEC (2013)

**Upland Vegetation Communities**

- AG - Agriculture
- AGFC - Agriculture Field Croplands
- RSS - Riversidean Sage Scrub
- DRSS - Disturbed Riversidean Sage Scrub
- DDL - Residential/Urban/Exotic
- NNG - Non-native Grassland
- DNNG - Disturbed Non-native Grassland

**MSHCP Riparian/Riverine Vegetation Communities**

- CAM - Cismontane Alkali Marsh
- SWS - Southern Willow Scrub
- SCWR - Southern Cottonwood/Willow Riparian Forest
- MFS - Mule Fat Scrub
- RS - Riparian Scrub
- Riverine
- Vernal Pool

**Potential Jurisdictional Waters (AMEC)**

- Waters of the U.S. and Waters of the State of California
- Wetland
- Existing Culvert
- Impacted Jurisdictional Features

**\* Map Notes:**

- Project Features subject to change based on geotechnical investigations, final engineering, ongoing coordination with the resource agencies, and field assessments conducted prior to construction
- Map Current as of 10/9/2014

**amec**

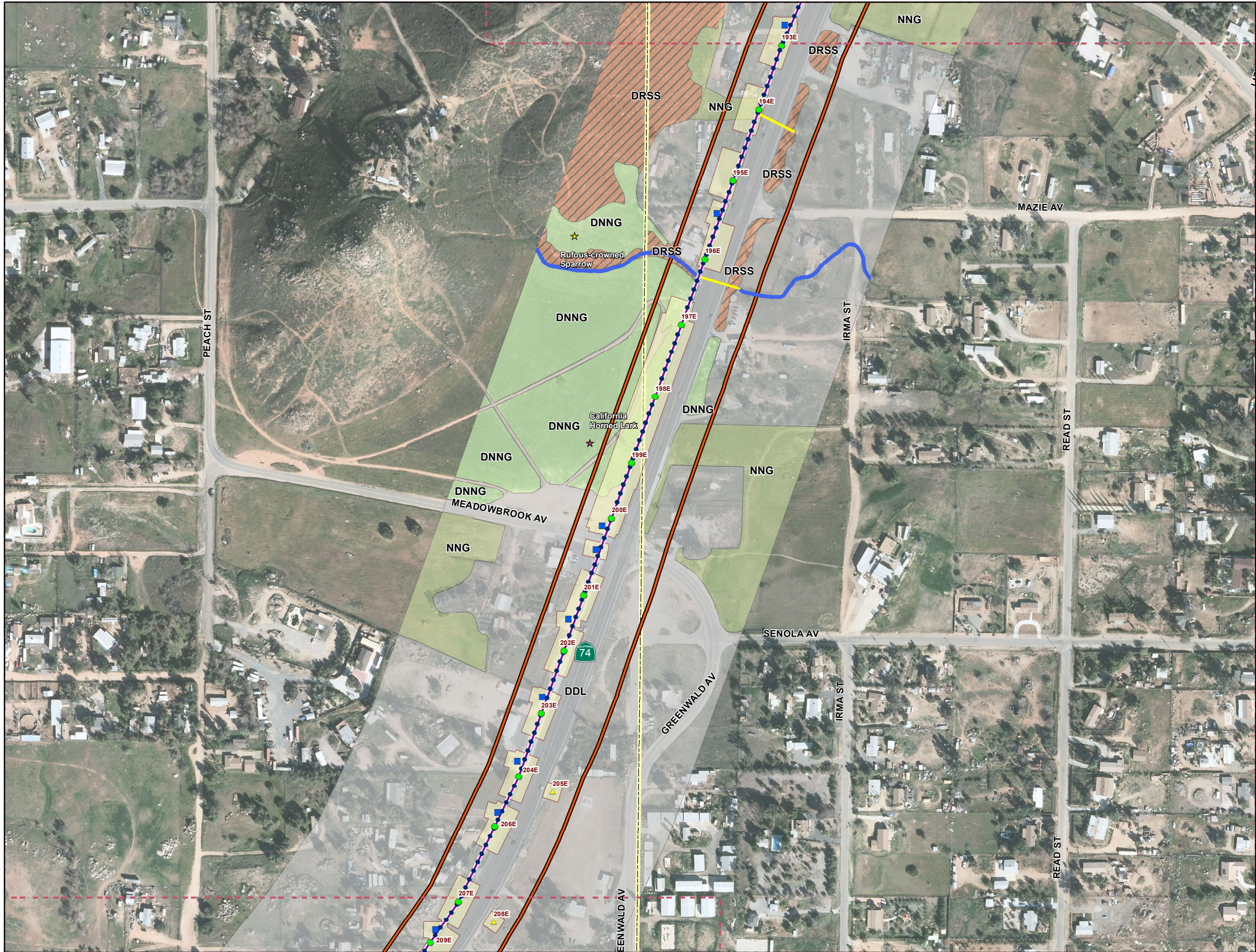
1 inch = 300 feet

0 150 300 Feet

**Appendix A1 - Biological Resources**  
**MSHCP Biological Resources Technical Report**  
**for the Valley-Ivyglen Subtransmission Line Project**  
**Phase 1**  
**Riverside County, California**

**Map 13**





Path: Q:\NaturalResources\SCE\_ValleyIvyglen\mxd\2014\ReportsAndSubmissions\BTR\Phase1\BioResourceMaps\_Phase1.mxd, aaron.johnson, 10/8/2014

### Legend

**Project Features\***

**Pole Type**

- Guy
- LWSP
- Riser
- TSP
- Guard Structures
- Access Roads
- Material Yards
- Construction Avoidance Area (1 March - 31 August)
- Proposed Willow Planting Mitigation Area
- Conserved Lands (MSHCP)
- CPUC Buffer (May 2013)
- Riverside/Corona Resource Conservation District
- Map Page Indicator

**Subtransmission Route**

- Segment 1
- Segment 2
- Segment 3
- Underground Portion

**Fiber Optic Line**

- Overhead Fiber Optic Cable
- Underground Fiber Optic in Existing Conduit
- Underground Fiber Optic in New Conduit

**Drainage Control Features (90%)**

- Culvert
- Gabion
- Rip-Rap

**Impact Areas\***

- Permanent
- Temporary
- Tree Trimming Areas

**Sensitive Species Data**

- Sensitive Species (2013)
- Sensitive Species (2012)
- Sensitive Species (2011)
- Sensitive Species (2010)
- Sensitive Species (2009)
- Sensitive Species (2008)
- Sensitive Species (2007)
- Sensitive Species (2006)
- CNDDDB (2013)

**Potential Burrowing Owl Burrows (w/signs)**

- AMEC (2011)
- AMEC (2013)

**Upland Vegetation Communities**

- AG - Agriculture
- AGFC - Agriculture Field Croplands
- RSS - Riversidean Sage Scrub
- DRSS - Disturbed Riversidean Sage Scrub
- DDL - Residential/Urban/Exotic
- NNG - Non-native Grassland
- DNNG - Disturbed Non-native Grassland

**MSHCP Riparian/Riverine Vegetation Communities**

- CAM - Cismontane Alkali Marsh
- SWS - Southern Willow Scrub
- SCWR - Southern Cottonwood/Willow Riparian Forest
- MFS - Mule Fat Scrub
- RS - Riparian Scrub
- Riverine
- Vernal Pool

**Potential Jurisdictional Waters (AMEC)**

- Waters of the U.S. and Waters of the State of California
- Wetland
- Existing Culvert
- Impacted Jurisdictional Features

**\* Map Notes:**

- Project Features subject to change based on geotechnical investigations, final engineering, ongoing coordination with the resource agencies, and field assessments conducted prior to construction
- Map Current as of 10/9/2014

**amec**

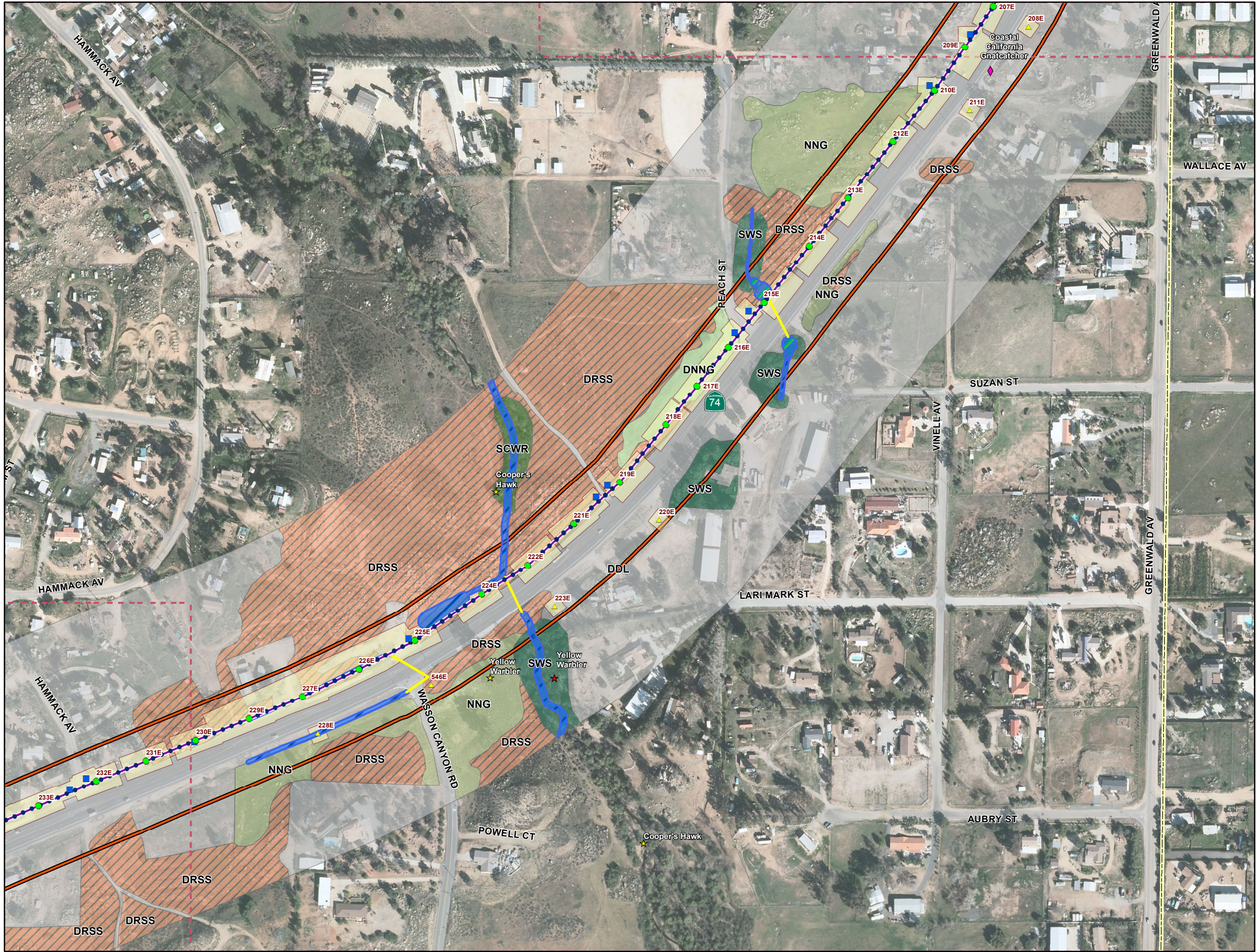
1 inch = 300 feet

0 150 300 Feet

**Appendix A1 - Biological Resources**  
**MSHCP Biological Resources Technical Report**  
**for the Valley-Ivyglen Subtransmission Line Project**  
**Phase 1**  
**Riverside County, California**

**Map 14**





### Legend

**Project Features\***

**Pole Type**

- Guy
- LWSP
- Riser
- TSP
- Guard Structures
- Access Roads
- Material Yards
- Construction Avoidance Area (1 March - 31 August)
- Proposed Willow Planting Mitigation Area
- Conserved Lands (MSHCP)
- CPUC Buffer (May 2013)
- Riverside/Corona Resource Conservation District
- Map Page Indicator

**Subtransmission Route**

- Segment 1
- Segment 2
- Segment 3
- Underground Portion

**Fiber Optic Line**

- Overhead Fiber Optic Cable
- Underground Fiber Optic in Existing Conduit
- Underground Fiber Optic in New Conduit

**Drainage Control Features (90%)**

- Culvert
- Gabion
- Rip-Rap

**Impact Areas\***

- Permanent
- Temporary
- Tree Trimming Areas

**Sensitive Species Data**

- Sensitive Species (2013)
- Sensitive Species (2012)
- Sensitive Species (2011)
- Sensitive Species (2010)
- Sensitive Species (2009)
- Sensitive Species (2008)
- Sensitive Species (2007)
- Sensitive Species (2006)
- CNDDB (2013)

**Potential Burrowing Owl Burrows (w/signs)**

- AMEC (2011)
- AMEC (2013)

**Upland Vegetation Communities**

- AG - Agriculture
- AGFC - Agriculture Field Croplands
- RSS - Riverside Sage Scrub
- DRSS - Disturbed Riverside Sage Scrub
- DDL - Residential/Urban/Exotic
- NNG - Non-native Grassland
- DNNG - Disturbed Non-native Grassland

**MSHCP Riparian/Riverine Vegetation Communities**

- CAM - Cismontane Alkali Marsh
- SWS - Southern Willow Scrub
- SCWR - Southern Cottonwood/Willow Riparian Forest
- MFS - Mule Fat Scrub
- RS - Riparian Scrub
- Riverine
- Vernal Pool

**Potential Jurisdictional Waters (AMEC)**

- Waters of the U.S. and Waters of the State of California
- Wetland
- Existing Culvert
- Impacted Jurisdictional Features

**\* Map Notes:**

- Project Features subject to change based on geotechnical investigations, final engineering, ongoing coordination with the resource agencies, and field assessments conducted prior to construction
- Map Current as of 10/9/2014

**amec**

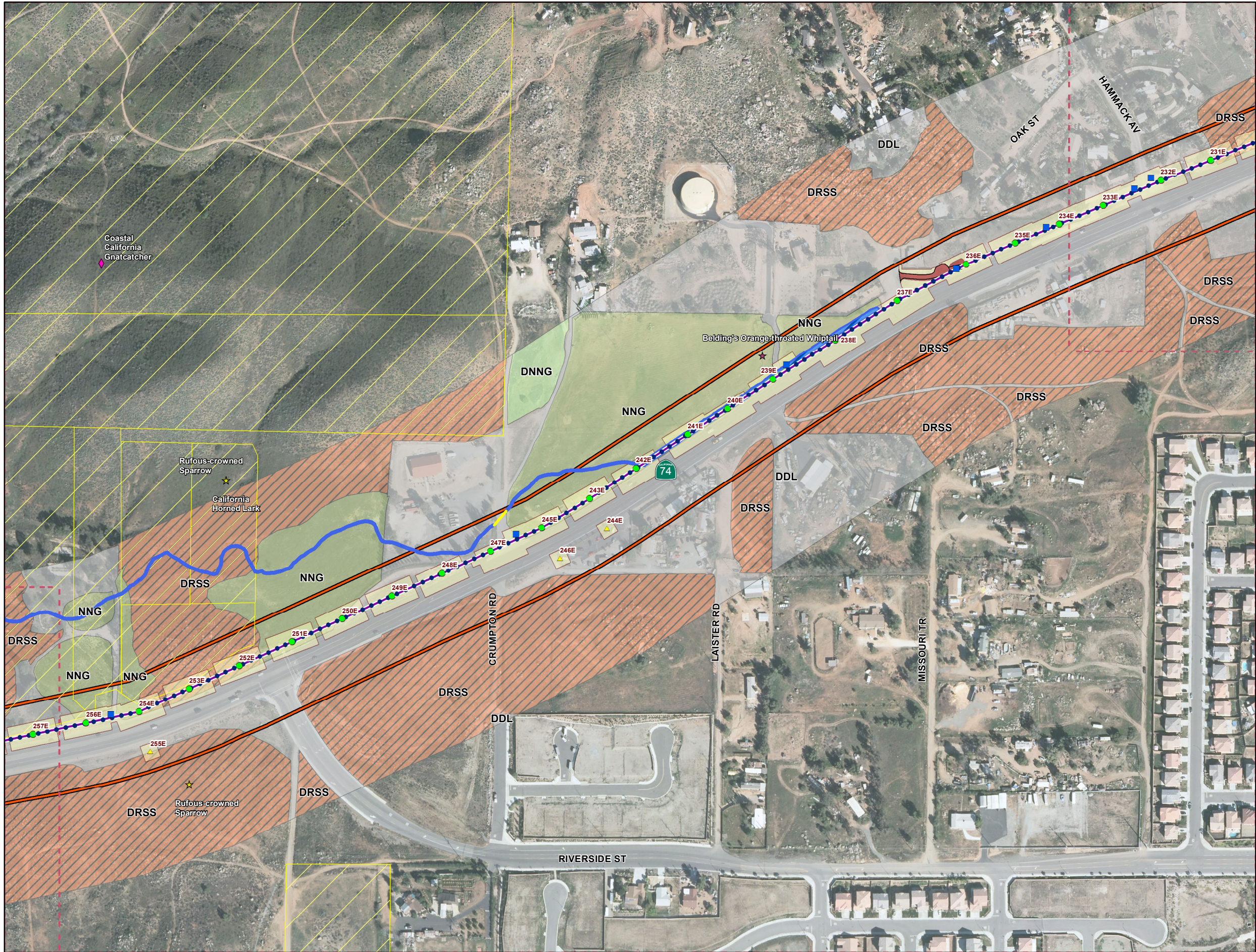
1 inch = 300 feet

0 150 300 Feet

**Appendix A1 - Biological Resources**  
**MSHCP Biological Resources Technical Report**  
**for the Valley-Ivyglen Subtransmission Line Project**  
**Phase 1**  
**Riverside County, California**

**Map 15**





Path: Q:\NaturalResources\SCE\_ValleyIvyglen\mxd\2014\ReportsAndSubmissions\BTR\Phase1\BioResourceMaps\_Phase1.mxd, aaron.johnson, 10/8/2014

### Legend

**Project Features\***

**Pole Type**

- Guy
- LWSP
- Riser
- TSP
- Guard Structures
- Access Roads
- Material Yards
- Construction Avoidance Area (1 March - 31 August)
- Proposed Willow Planting Mitigation Area
- Conserved Lands (MSHCP)
- CPUC Buffer (May 2013)
- Riverside/Corona Resource Conservation District
- Map Page Indicator

**Subtransmission Route**

- Segment 1
- Segment 2
- Segment 3
- Underground Portion

**Fiber Optic Line**

- Overhead Fiber Optic Cable
- Underground Fiber Optic in Existing Conduit
- Underground Fiber Optic in New Conduit

**Drainage Control Features (90%)**

- Culvert
- Gabion
- Rip-Rap

**Impact Areas\***

- Permanent
- Temporary
- Tree Trimming Areas

**Sensitive Species Data**

- Sensitive Species (2013)
- Sensitive Species (2012)
- Sensitive Species (2011)
- Sensitive Species (2010)
- Sensitive Species (2009)
- Sensitive Species (2008)
- Sensitive Species (2007)
- Sensitive Species (2006)
- CNDDB (2013)

**Potential Burrowing Owl Burrows (w/signs)**

- AMEC (2011)
- AMEC (2013)

**Upland Vegetation Communities**

- AG - Agriculture
- AGFC - Agriculture Field Croplands
- RSS - Riversidean Sage Scrub
- DRSS - Disturbed Riversidean Sage Scrub
- DDL - Residential/Urban/Exotic
- NNG - Non-native Grassland
- DNNG - Disturbed Non-native Grassland

**MSHCP Riparian/Riverine Vegetation Communities**

- CAM - Cismontane Alkali Marsh
- SWS - Southern Willow Scrub
- SCWR - Southern Cottonwood/Willow Riparian Forest
- MFS - Mule Fat Scrub
- RS - Riparian Scrub
- Riverine
- Vernal Pool

**Potential Jurisdictional Waters (AMEC)**

- Waters of the U.S. and Waters of the State of California
- Wetland
- Existing Culvert
- Impacted Jurisdictional Features

**\* Map Notes:**

- Project Features subject to change based on geotechnical investigations, final engineering, ongoing coordination with the resource agencies, and field assessments conducted prior to construction
- Map Current as of 10/9/2014

**amec**

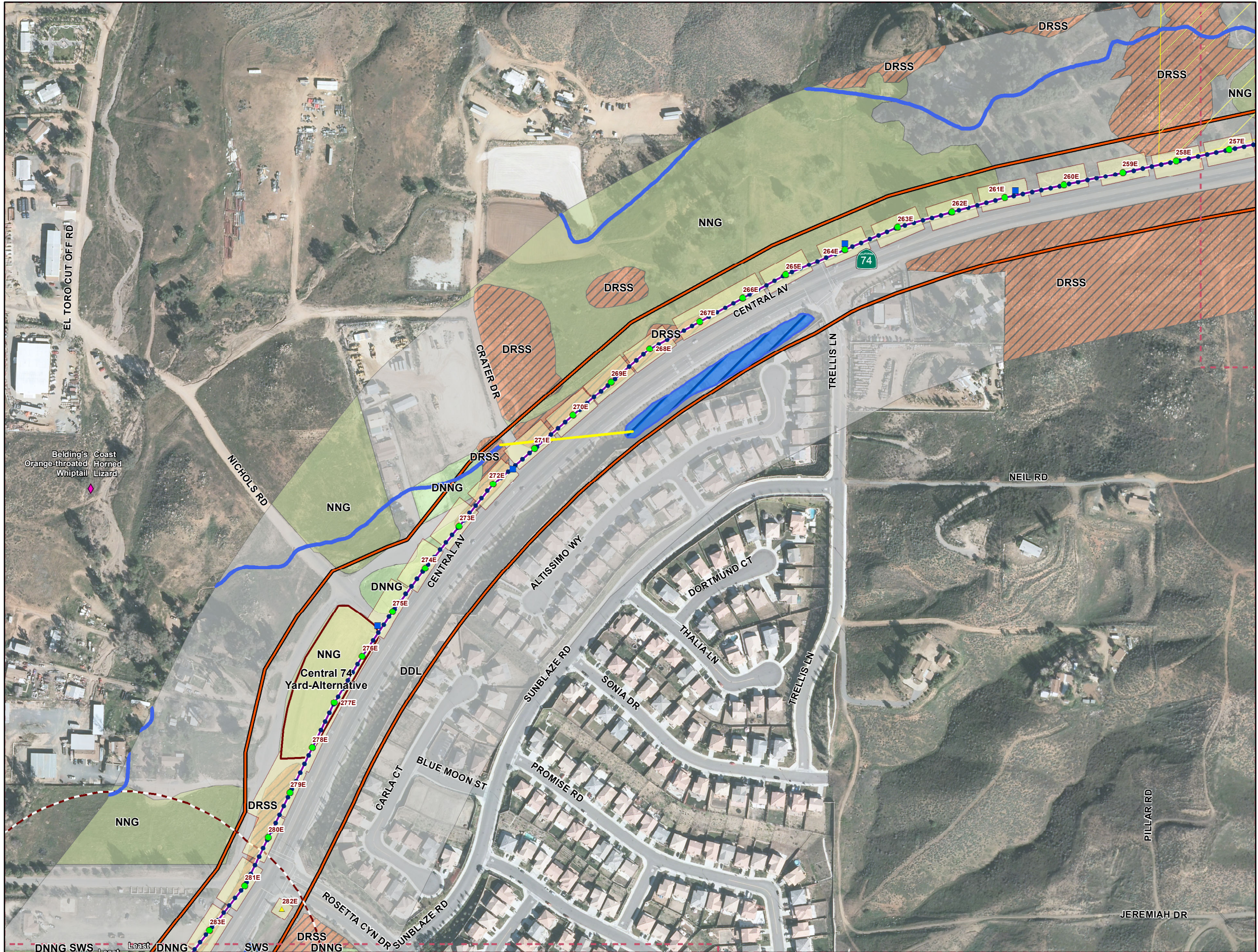
1 inch = 300 feet

0 150 300 Feet

**Appendix A1 - Biological Resources**  
**MSHCP Biological Resources Technical Report**  
**for the Valley-Ivyglen Subtransmission Line Project**  
**Phase 1**  
**Riverside County, California**

**Map 16**





Path: Q:\NaturalResources\SCF\_ValleyIvyglen\mxd\2014\ReportsAndSubmissions\BTR\Phase1\BioResourceMaps\_Phase1.mxd, aaron.johnson, 10/8/2014

### Legend

**Project Features\***

**Pole Type**

- Guy
- LWSP
- Riser
- TSP
- Guard Structures
- Access Roads
- Material Yards
- Construction Avoidance Area (1 March - 31 August)
- Proposed Willow Planting Mitigation Area
- Conserved Lands (MSHCP)
- CPUC Buffer (May 2013)
- Riverside/Corona Resource Conservation District
- Map Page Indicator

**Subtransmission Route**

- Segment 1
- Segment 2
- Segment 3
- Underground Portion

**Fiber Optic Line**

- Overhead Fiber Optic Cable
- Underground Fiber Optic in Existing Conduit
- Underground Fiber Optic in New Conduit

**Drainage Control Features (90%)**

- Culvert
- Gabion
- Rip-Rap

**Impact Areas\***

- Permanent
- Temporary
- Tree Trimming Areas

**Sensitive Species Data**

- Sensitive Species (2013)
- Sensitive Species (2012)
- Sensitive Species (2011)
- Sensitive Species (2010)
- Sensitive Species (2009)
- Sensitive Species (2008)
- Sensitive Species (2007)
- Sensitive Species (2006)
- CNDDB (2013)

**Potential Burrowing Owl Burrows (w/signs)**

- AMEC (2011)
- AMEC (2013)

**Upland Vegetation Communities**

- AG - Agriculture
- AGFC - Agriculture Field Croplands
- RSS - Riverside Sage Scrub
- DRSS - Disturbed Riverside Sage Scrub
- DDL - Residential/Urban/Exotic
- NNG - Non-native Grassland
- DNNG - Disturbed Non-native Grassland

**MSHCP Riparian/Riverine Vegetation Communities**

- CAM - Cismontane Alkali Marsh
- SWS - Southern Willow Scrub
- SCWR - Southern Cottonwood/Willow Riparian Forest
- MFS - Mule Fat Scrub
- RS - Riparian Scrub
- Riverine
- Vernal Pool

**Potential Jurisdictional Waters (AMEC)**

- Waters of the U.S. and Waters of the State of California
- Wetland
- Existing Culvert
- Impacted Jurisdictional Features

**\* Map Notes:**

- Project Features subject to change based on geotechnical investigations, final engineering, ongoing coordination with the resource agencies, and field assessments conducted prior to construction
- Map Current as of 10/9/2014

**amec**

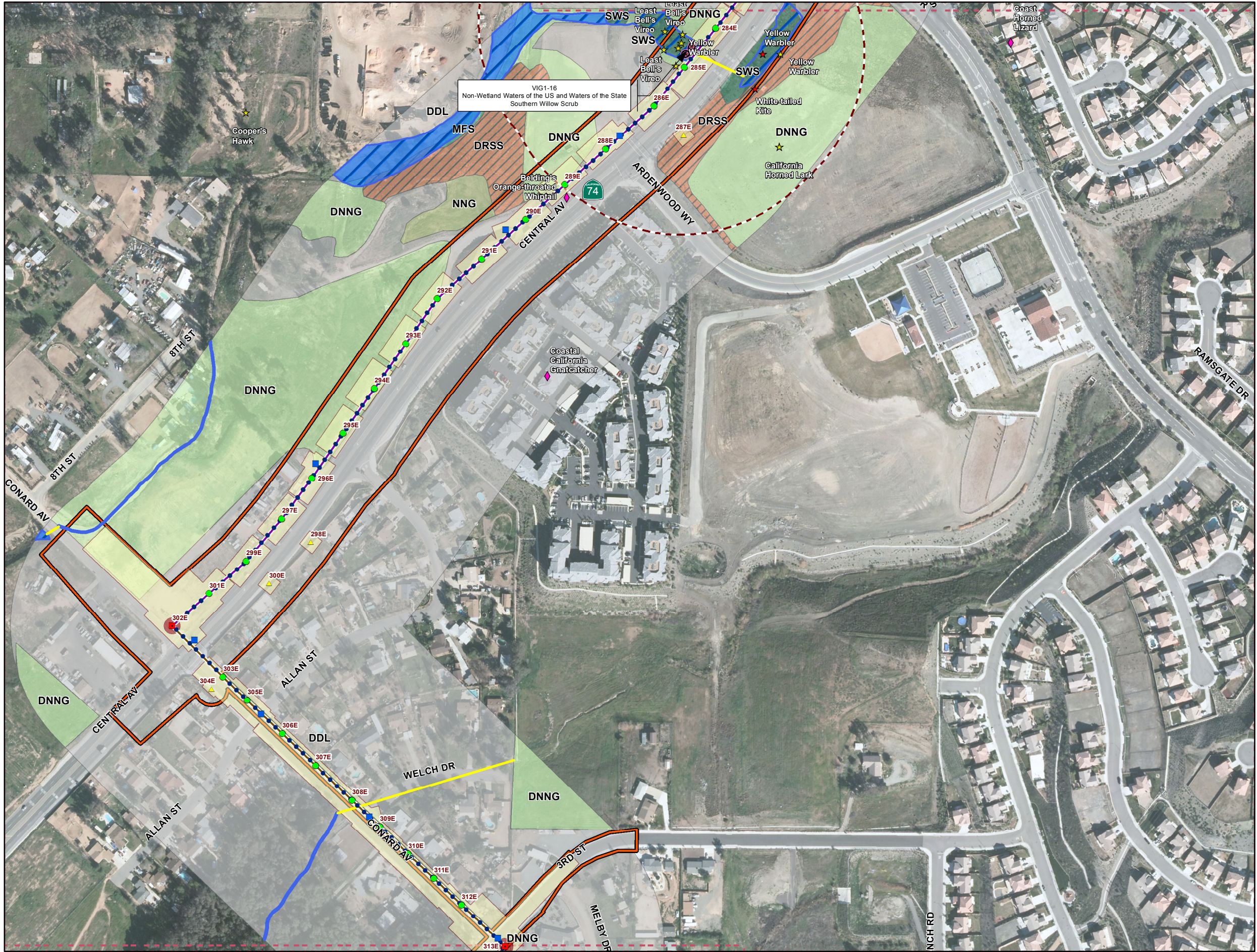
1 inch = 300 feet

0 150 300 Feet

**Appendix A1 - Biological Resources**  
**MSHCP Biological Resources Technical Report**  
**for the Valley-Ivyglen Subtransmission Line Project**  
**Phase 1**  
**Riverside County, California**

**Map 17**





Path: Q:\NaturalResources\SCE\_ValleyIvyglen\mxd\2014\ReportsAndSubmissions\BTR\Phase1\BioResourceMaps\_Phase1.mxd, aaron.johnson, 10/8/2014

# Legend

**Project Features\***

**Pole Type**

- Guy
- LWSP
- Riser
- TSP
- Guard Structures
- Access Roads
- Material Yards
- Construction Avoidance Area (1 March - 31 August)
- Proposed Willow Planting Mitigation Area
- Conserved Lands (MSHCP)
- CPUC Buffer (May 2013)
- Riverside/Corona Resource Conservation District
- Map Page Indicator

**Subtransmission Route**

- Segment 1
- Segment 2
- Segment 3
- Underground Portion

**Fiber Optic Line**

- Overhead Fiber Optic Cable
- Underground Fiber Optic in Existing Conduit
- Underground Fiber Optic in New Conduit

**Drainage Control Features (90%)**

- Culvert
- Gabion
- Rip-Rap

**Impact Areas\***

- Permanent
- Temporary
- Tree Trimming Areas

**Sensitive Species Data**

- Sensitive Species (2013)
- Sensitive Species (2012)
- Sensitive Species (2011)
- Sensitive Species (2010)
- Sensitive Species (2009)
- Sensitive Species (2008)
- Sensitive Species (2007)
- Sensitive Species (2006)
- CNDDB (2013)

**Potential Burrowing Owl Burrows (w/signs)**

- AMEC (2011)
- AMEC (2013)

**Upland Vegetation Communities**

- AG - Agriculture
- AGFC - Agriculture Field Croplands
- RSS - Riversidean Sage Scrub
- DRSS - Disturbed Riversidean Sage Scrub
- DDL - Residential/Urban/Exotic
- NNG - Non-native Grassland
- DNNG - Disturbed Non-native Grassland

**MSHCP Riparian/Riverine Vegetation Communities**

- CAM - Cismontane Alkali Marsh
- SWS - Southern Willow Scrub
- SCWR - Southern Cottonwood/Willow Riparian Forest
- MFS - Mule Fat Scrub
- RS - Riparian Scrub
- Riverine
- Vernal Pool

**Potential Jurisdictional Waters (AMEC)**

- Waters of the U.S. and Waters of the State of California
- Wetland
- Existing Culvert
- Impacted Jurisdictional Features

**\* Map Notes:**

- Project Features subject to change based on geotechnical investigations, final engineering, ongoing coordination with the resource agencies, and field assessments conducted prior to construction
- Map Current as of 10/9/2014

**amec**

1 inch = 300 feet

0 150 300 Feet

**Appendix A1 - Biological Resources**  
**MSHCP Biological Resources Technical Report**  
**for the Valley-Ivyglen Subtransmission Line Project**  
**Phase 1**  
**Riverside County, California**

**Map 18**





### Legend

**Project Features\***

**Pole Type**

- Guy
- LWSP
- Riser
- TSP
- Guard Structures
- Access Roads
- Material Yards
- Construction Avoidance Area (1 March - 31 August)
- Proposed Willow Planting Mitigation Area
- Conserved Lands (MSHCP)
- CPUC Buffer (May 2013)
- Riverside/Corona Resource Conservation District
- Map Page Indicator

**Subtransmission Route**

- Segment 1
- Segment 2
- Segment 3
- Underground Portion

**Fiber Optic Line**

- Overhead Fiber Optic Cable
- Underground Fiber Optic in Existing Conduit
- Underground Fiber Optic in New Conduit

**Drainage Control Features (90%)**

- Culvert
- Gabion
- Rip-Rap

**Impact Areas\***

- Permanent
- Temporary
- Tree Trimming Areas

**Sensitive Species Data**

- Sensitive Species (2013)
- Sensitive Species (2012)
- Sensitive Species (2011)
- Sensitive Species (2010)
- Sensitive Species (2009)
- Sensitive Species (2008)
- Sensitive Species (2007)
- Sensitive Species (2006)
- CNDDB (2013)

**Potential Burrowing Owl Burrows (w/signs)**

- AMEC (2011)
- AMEC (2013)

**Upland Vegetation Communities**

- AG - Agriculture
- AGFC - Agriculture Field Croplands
- RSS - Riversidean Sage Scrub
- DRSS - Disturbed Riversidean Sage Scrub
- DDL - Residential/Urban/Exotic
- NNG - Non-native Grassland
- DNNG - Disturbed Non-native Grassland

**MSHCP Riparian/Riverine Vegetation Communities**

- CAM - Cismontane Alkali Marsh
- SWS - Southern Willow Scrub
- SCWR - Southern Cottonwood/Willow Riparian Forest
- MFS - Mule Fat Scrub
- RS - Riparian Scrub
- Riverine
- Vernal Pool

**Potential Jurisdictional Waters (AMEC)**

- Waters of the U.S. and Waters of the State of California
- Wetland
- Existing Culvert
- Impacted Jurisdictional Features

**\* Map Notes:**

- Project Features subject to change based on geotechnical investigations, final engineering, ongoing coordination with the resource agencies, and field assessments conducted prior to construction
- Map Current as of 10/9/2014

**amec**

1 inch = 300 feet

0 150 300 Feet

**Appendix A1 - Biological Resources**  
**MSHCP Biological Resources Technical Report**  
**for the Valley-Ivyglen Subtransmission Line Project**  
**Phase 1**  
**Riverside County, California**

**Map 19**